

# Open Data Sources for Water Resources

Remote Sensing & GIS Technologies for  
Water Resources Applications

*Saksham Joshi*

WRAD/WRG/RSAA  
National Remote Sensing Centre  
Hyderabad - 500037, India  
[saksham\\_joshi@nrsc.gov.in](mailto:saksham_joshi@nrsc.gov.in)  
040-23884529

*24<sup>th</sup> June 2021*



**nrsc**

- Open source datasets
- Remote sensing



OSTM/Jason 2  
(NOAA)

Aquarius

QuikSCAT

TRMM

Terra

ISS-RapidScat,  
CATS

EO-1

SMAP

Aqua

Landsat 7  
(USGS)

Suomi NPP  
(NOAA)

SORCE,  
TCTE (NOAA)

Landsat 8  
(USGS)

Aura

GPM

GRACE (2)

CALIPSO

CloudSat

OCO-2

# Global Datasets

# Global Datasets

## Precipitation

- TRMM
- CHIRPS
- GPM
- CMORPH
- PERSIANN
- CPC
- ARC
- GPCC

## Evapotranspiration

- MOD16
- GLEAM
- ET-Monitor
- LANDSAF
- METRIC/EEFLUX
- ALEXI
- CMRSET
- SEBS
- SSEBop

## Land Use Land Cover

- NRC-250k LULC
- GLOBCOVER
- IWMI
- GMIA
- MICRA
- WDPA
- JRC
- GRAND
- MODIS
- WORLD POP
- GLOBAL SURFACE WATER

## Soil Moisture

- GLDAS
- ASCAT
- SMAP

## MODIS

- LAI – MOD15
- GPP – MOD17
- NPP – MOD17

## Others

- Grey Water Footprint
- Environmental Water Flow
- Elevation – HydroSHEDS
- GRACE

# Global Datasets

## Glacier & Snow Monitoring

- Mountain Geoportal (ICIMOD)
- Mountain Geoportal (ICIMOD)
- GLIMS Glacier Viewer (NSIDC)
- Swiss GMN
- Arctic SDI Geoportal

## DEM

- SRTM
- ASTER
- CARTOsat
- GTOPO

## Irrigation Informatics

- Water Watch
- CIMIS
- WaterNSW
- IWMI
- DEWS
- Global surface water explorer

## Others

- National water information system :Web Interface
- AQUASTAT
- Giovanni
- Environmental Data Explorer
- Joint Research Centre
- Water Portal
- LAADS DAAC
- DIVA-GIS

## Precipitation

- TRMM
- CHIRPS
- GPM
- CMORPH
- PERSIANN
- CPC
- ARC
- GPCC

## Soil Moisture

- GLDAS
- ASCAT
- SMAP

## *Precipitation: TRMM*

- Tropical Rainfall Measuring Mission (TRMM)
- NASA & JAXA mission
- Spatial resolution: 0.25° ~27 km
- Temporal resolution: 3-hourly, daily, monthly
- From 1998 to April 2015
  
- Instruments
  - Precipitation radar
  - Microwave imager
  - Visible and Infrared Scanner (VIRS)
  - Lightning Image Sensor (LIS)

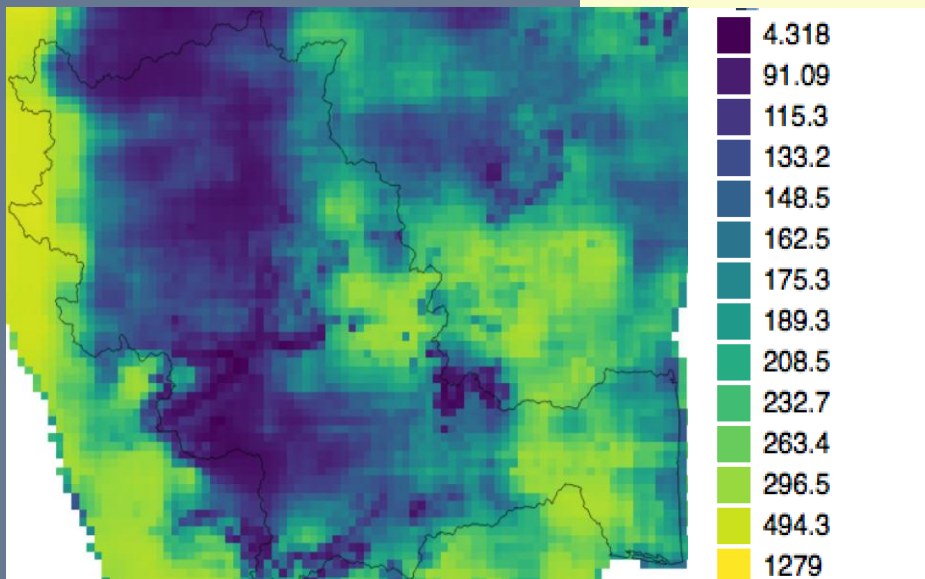
- Elevation – HydroSHEDS
- GRACE

## Precipitation

- TRMM
- **CHIRPS**
- GPM
- CMORPH
- PERSIANN
- CPC
- ARC
- GPCC

## *Precipitation: CHIRPS*

- Climate Hazards Group InfraRed Precipitation with Station data (CHIRPS)
- Funded by USGS and USAID
- Spatial Extent: -180, 180, -50, 50°
- Temporal resolution: daily, monthly
- Initial date: 1981
- Spatial Resolution: 0.25°



- Environmental water flow
- Elevation – HydroSHEDS
- GRACE

## Precipitation

- TRMM
- CHIRPS
- **GPM**
- CMORPH
- PERSIANN
- CPC
- ARC
- GPCC

## Soil Moisture

- GLDAS
- ASCAT
- SMAP

## *Precipitation: GPM*

- Global Precipitation Measurement (GPM)
- NASA & JAXA Mission
- Spatial resolution: 0.1° ~11 km
- Temporal resolution: 30min
- Initial date: March 2015
- Instruments
  - Dual - Frequency Precipitation radar (DPR) x2
  - Microwave imager

- NPP – MOD17

- Environmental Water Flow
- Elevation – HydroSHEDS
- GRACE



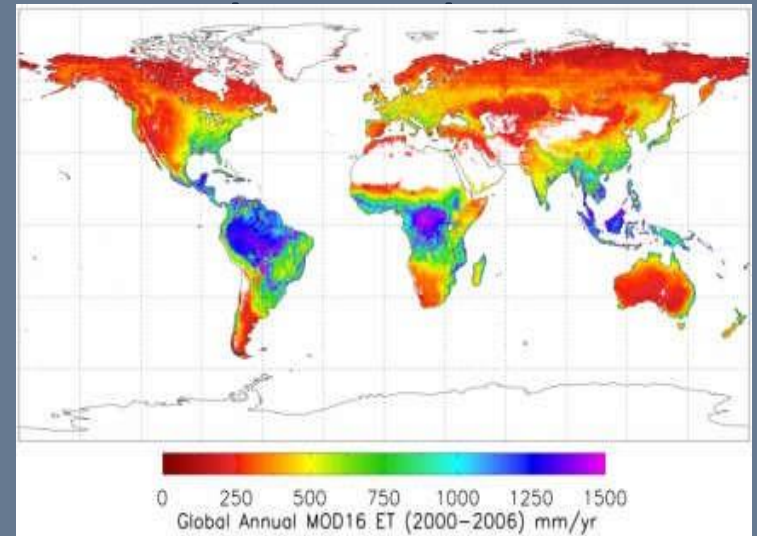
# Global Datasets

## Precipitation

- TRMM
- CHIRPS
- GPM
- CMORPH
- PERSIANN
- CPC
- ARC
- GPCC

## Evapotranspiration

- MOD16
- GLEAM
- ET-Monitor
- LANDSAF
- METRIC/EEFLUX
- ALEXI
- CMRSET
- SEBS
- SSEBop



- MODIS
- WORLD POP
- GLOBAL SURFACE WATER

## ***Evapotranspiration: MOD16***

- Moderate Resolution Imaging Spectroradiometer (MODIS)
- Two satellites / 36 bands
- Spatial Resolution: 1km
- Temporal resolution: 8-day, monthly
- Initial date: 2000

## Others

- Grey Water Footprint
- Environmental Water Flow
- Elevation – HydroSHEDS
- GRACE

Source: <http://www.ntsug.umt.edu/project/mod16>  
<http://modis.gsfc.nasa.gov/data/dataproduct/>

# Global Datasets

## Precipitation

- TRMM
- CHIRPS
- GPM
- CMORPH
- PERSIANN
- CPC
- ARC
- GPCC

## Evapotranspiration

- MOD16
- **GLEAM**
- ET-Monitor
- LANDSAF
- METRIC/EEFLUX
- ALEXI
- CMRSET
- SEBS
- SSEBop

### ***Evapotranspiration: GLEAM***

- Global Land Evaporation Amsterdam Model (GLEAM)
- VU - ESA
- Global, 0.25° ~27km
- Temporal resolution: daily, monthly
- From 2003 to 2012

## Land Surface

### Rainfall Interception Model

Gash analytical model driven by observed rainfall

### Potential Evaporation Module

Priestley and Taylor eq. driven by satellite-observed meteorology

$$E = E_p \times S + E_i$$

### Stress Module

Semi-empirical relationship to root-zone soil moisture and VOD

### Soil Module

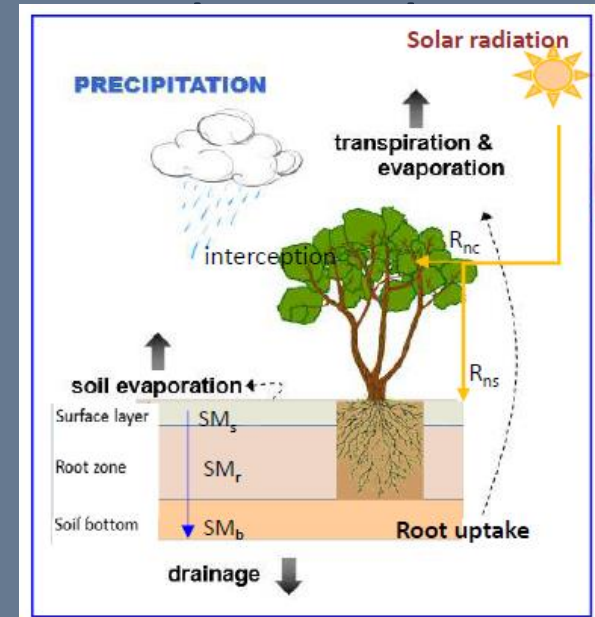
Multi-layer model driven by satellite precipitation and surface soil moisture

## Precipitation

- TRMM
- CHIRPS
- GPM
- CMORPH
- PERSIANN
- CPC
- ARC
- GPCC

## Evapotranspiration

- MOD16
- GLEAM
- **ET-Monitor**
- LANDSAF
- METRIC/EEFLUX
- ALEXI
- CMRSET
- SEBS
- SSEBop



- GLOBAL SURFACE WATER

## ***Evapotranspiration: ET - Monitor***

- A process based model implementing processes of energy balance, plant physiology and soil water balance developed by EOWater Lab at RADL.

## Others

Grey Water Footprint  
Environmental Water Flow  
Elevation – HydroSHEDS  
GRACE

# Global Datasets

## Precipitation

- TRMM
- CHIRPS
- GPM
- CMORPH
- PERSIANN
- CPC
- ARC
- GPCC

## Evapotranspiration

- MOD16
- GLEAM
- ET-Monitor
- LANDSAF
- METRIC/EEFLUX
- **ALEXI**
- CMRSET
- SEBS
- SSEBop

## Land Use Land Cover

- NRC-250k LULC
- GLOBCOVER
- IWMI
- GMIA
- MICRA
- WDPA
- JRC
- GRAND
- MODIS
- WORLD POP
- GLOBAL SURFACE WATER

### ***Evapotranspiration: ALEXI***

- Atmosphere Land Exchange Inverse (ALEXI)
- $EF = \text{Latent Heat Flux} / (R_n - G)$
- Spatial Resolution – 0.027 degree ~ (3 km)
- Daily
- Data availability - 2007-2012

### Others

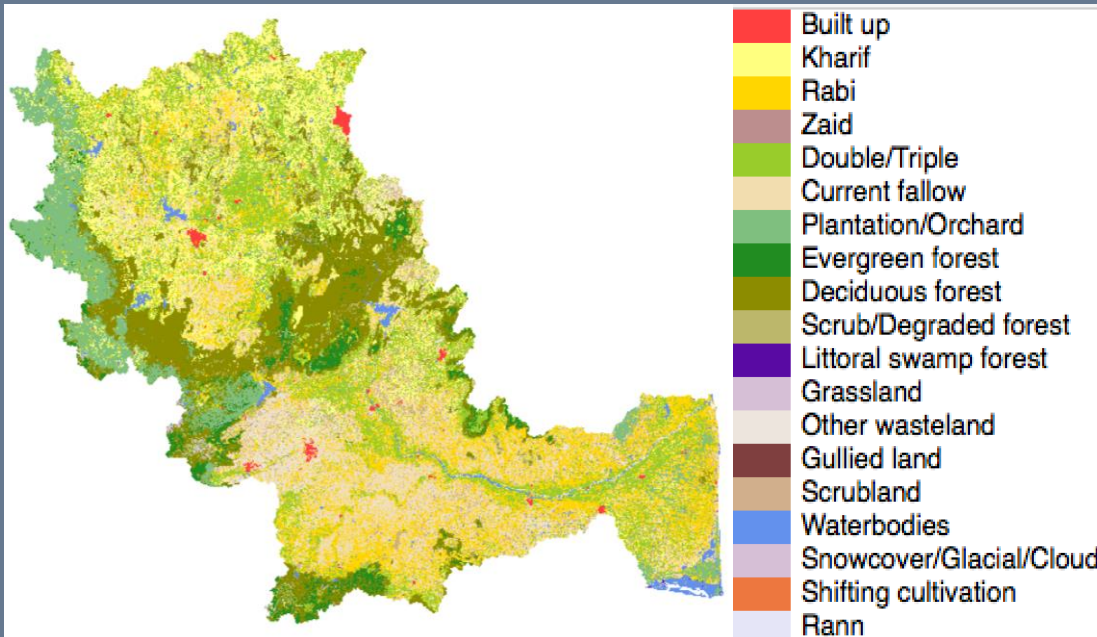
Grey Water Footprint  
Environmental Water Flow  
Elevation – HydroSHEDS  
GRACE

## Land Use Land Cover: NRC – 250k

- NRC – land cover
- Spatial resolution - 56 m
- Data Availability - 2004-05 to 2015-16
- ResourceSAT 2 – Advanced Wide Field Scanner (AWiFS)

• GPCP

• CMRSET



## Land Use Land Cover

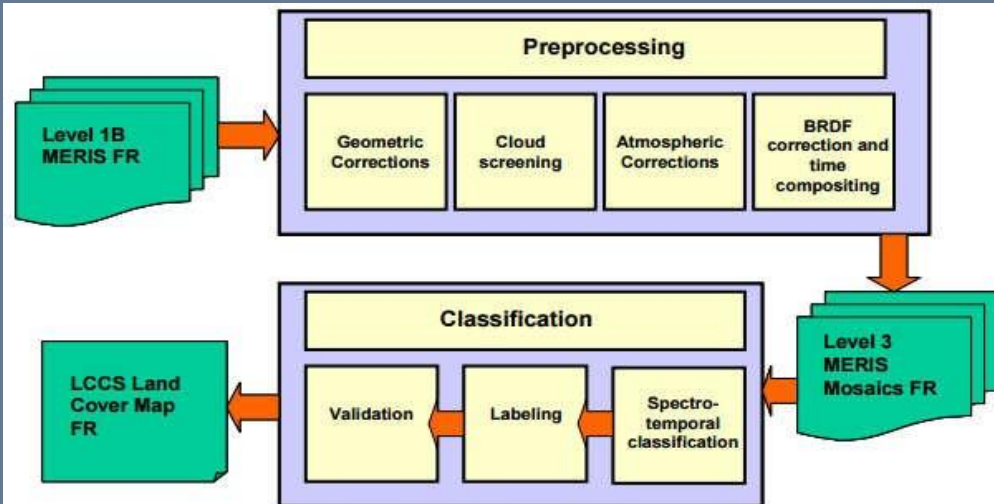
- NRC-250k LULC
- GLOBCOVER
- IWMI
- GMIA
- MIRCA
- WDPA
- JRC
- GRAND
- MODIS
- WORLD POP
- GLOBAL SURFACE WATER

## Others

- Grey Water Footprint
- Environmental Water Flow
- Elevation – HydroSHEDS
- GRACE

## Land Use Land Cover: GLOBCOVER

- ESA – land cover
- Spatial resolution -- 300m
- Two periods -- December 2004 – June 2006  
-- January – December 2009
- Meris mission
  - Land surface reflectance
  - Classification



## Land Use Land Cover

- NRC-250k LULC
- **GLOBCOVER**
- IWMI
- GMIA
- MIRCA
- WDPA
- JRC
- GRAND
- MODIS
- WORLD POP
- GLOBAL SURFACE WATER

## Others

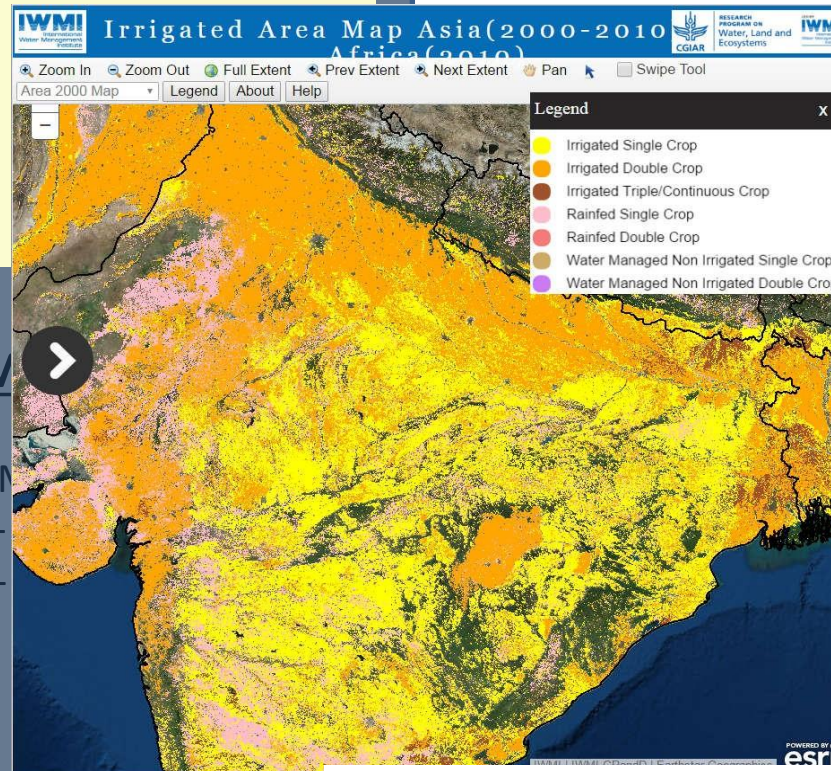
- Grey Water Footprint
- Environmental Water Flow
- Elevation – HydroSHEDS
- GRACE

## Land Use Land Cover: IWMI

- International Water Management Institute (IWMI)
- Agricultural Areas
  - Irrigated
  - Rainfed
- Spatial extent: Africa and Asia
- Period: 2000
- Spatial resolution: 250m
- Based on MODIS NDVI data

## Land Use Land Cover

- NRC-250k LULC
- GLOBCOVER
- IWMI
- GMIA
- MIRCA



## Soil Moisture

- GLDAS
- ASCAT
- SMAP
- LAI – M
- GPP –
- NPP –

## *Land Use Land Cover: GMIA*

- Global Map of Irrigated Areas
  - area equipped for irrigation with surface water
  - area equipped for irrigation with groundwater
  - area equipped for total irrigation
- It is based on statistical data from various sources.

## Land Use Land Cover

- NRC-250k LULC
- GLOBCOVER
- IWMI
- **GMIA**
- MIRCA
- WDPA
- JRC
- GRAND
- MODIS
- WORLD POP
- GLOBAL SURFACE WATER

## Others

- GLDAS
- ASCAT
- SMAP
- LAI – MOD15
- GPP – MOD17
- NPP – MOD17
- Grey Water Footprint
- Environmental Water Flow
- Elevation – HydroSHEDS
- GRACE



## Land Use Land Cover: MIRCA

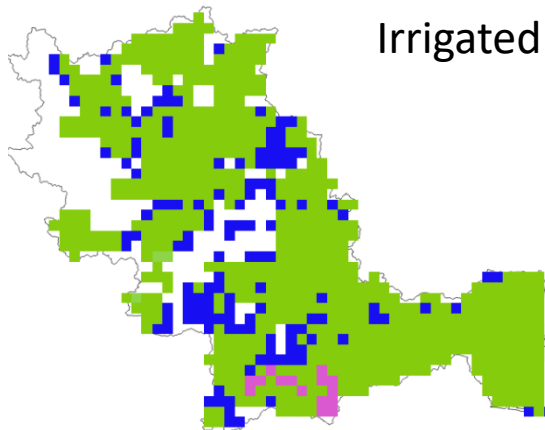
- Monthly growing area grids for 26 Dominant crop classes
  - Irrigated
  - Rainfed
- Spatial resolution - 10 km

- SEBS
- SSEBop

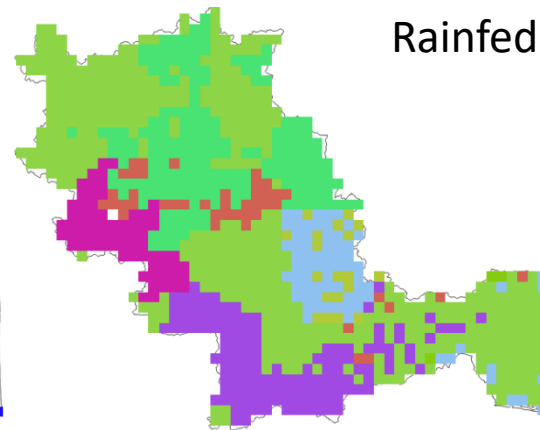
## Land Use Land Cover

- NRC-250k LULC
- GLOBCOVER
- IWMI
- GMIA
- **MIRCA**
- WDPA
- JRC
- GRAND
- MODIS
- WORLD POP
- GLOBAL SURFACE WATER

- Wheat
- Maize
- Rice
- Barley
- Rye
- Millet
- Sorghum
- Soybeans
- Sunflower
- Potatoes
- Cassava
- Sugar Cane
- Sugar Beets



Irrigated



Rainfed

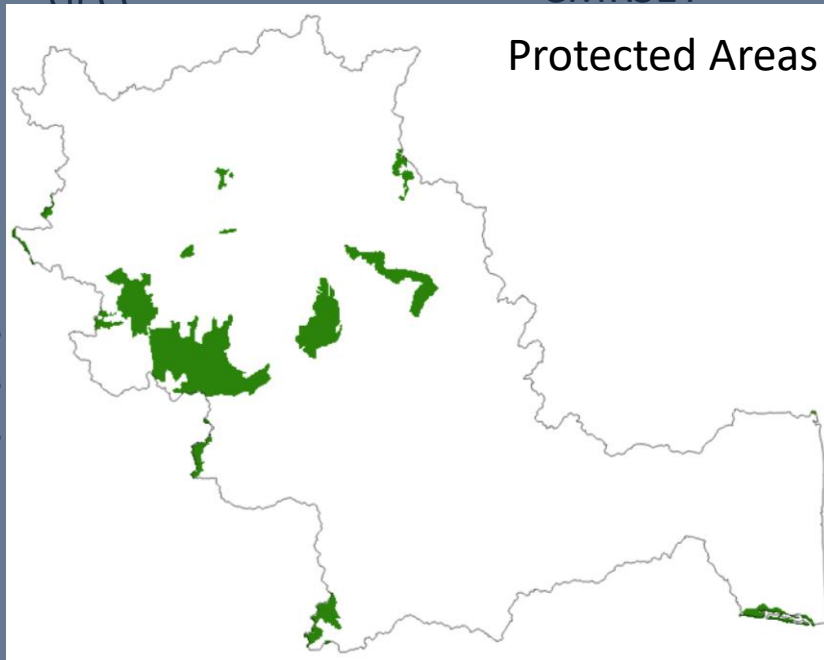
- Palm Oil
- Rape Seed
- Groundnuts
- Pulses
- Citrus
- Date Palm
- Grapes
- Cotton
- Cocoa
- Coffee
- Other Perennial
- Fodder

## *Land Use Land Cover: WDPA*

- World Database on Protected Areas
- Terrestrial and Marine protected areas
- Recognised as major tools in conserving species and ecosystem.

- ARC
- GPCC

- ALEXI
- CMRSET



## Land Use Land Cover

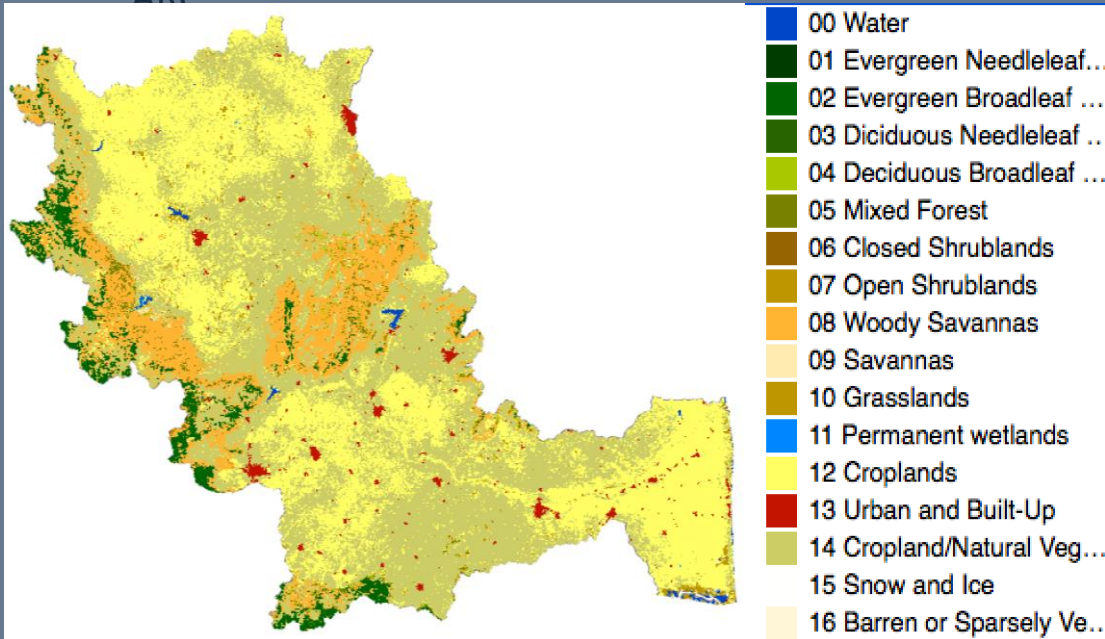
- NRC-250k LULC
- GLOBCOVER
- IWMI
- GMIA
- MICRA
- **WDPA**
- JRC
- GRAND
- MODIS
- WORLD POP
- GLOBAL SURFACE WATER

## Others

- Grey Water Footprint
- Environmental Water Flow
- Elevation – HydroSHEDS
- GRACE

## Land Use Land Cover: MODIS

- MCD12Q1
- Spatial resolution – 500 mtrs
- Temporal Coverage – 2001 -2013
- Total Classes – 17



## Land Use Land Cover

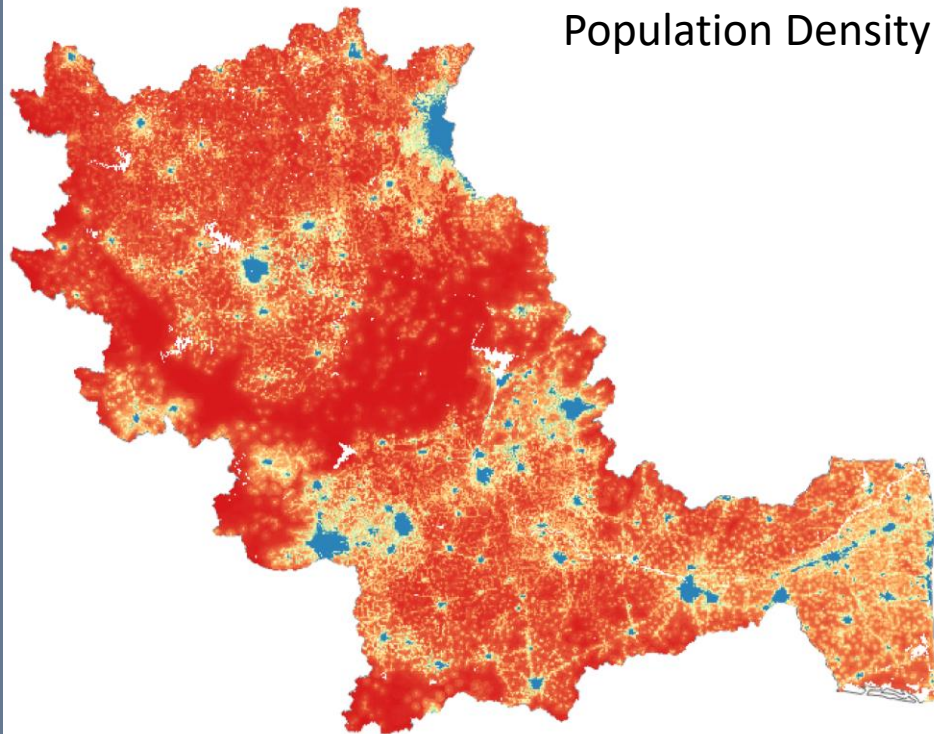
- NRC-250k LULC
- GLOBCOVER
- IWMI
- GMIA
- MICRA
- WDPA
- JRC
- GRAND
- **MODIS**
- WORLD POP
- GLOBAL SURFACE WATER

## Others

- Grey Water Footprint
- Environmental Water Flow
- Elevation – HydroSHEDS
- GRACE

## *Land Use Land Cover: World Population*

- Random Forest Model
    - Stevens, et al. ([2015](#))
  - Population density per Ha
  - PERSIANN
  - METRIC/EEFLUX
- Population Density



## Land Use Land Cover

- NRC-250k LULC
- GLOBCOVER
- IWMI
- GMIA
- MICRA
- WDPA
- JRC
- GRAND
- MODIS
- **WORLD POP**
- GLOBAL SURFACE WATER

## Others

- Grey Water Footprint
- Environmental Water Flow
- Elevation – HydroSHEDS
- GRACE

Source : **Stevens, F. R., Disaggregating Census Data for Population Mapping Using Random Forests with Remotely-Sensed and Ancillary Data.**

[doi:10.1371/journal.pone.0107042](https://doi.org/10.1371/journal.pone.0107042)

## ***Soil Moisture: ASCAT***

- Advanced SCATterometer (ASCAT)
- EUMETSAT
- Spatial resolution: 12.5km
- Temporal resolution: daily
- Initial date: 2007
- SWI (Soil Water Index) at different depths

### **Soil Moisture**

- GLDAS
- **ASCAT**
- SMAP

### **MODIS**

- LAI – MOD15
- GPP – MOD17
- NPP – MOD17

## **Land Use Land Cover**

- NRC-250k LULC
- GLOBCOVER
- IWMI
- GMIA
- MICRA
- WDPA
- JRC
- GRAND
- MODIS
- WORLD POP
- GLOBAL SURFACE WATER

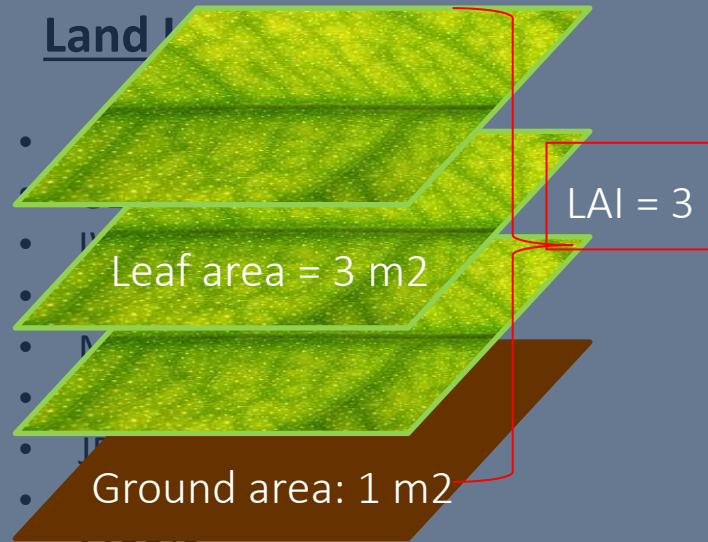
### **Others**

- Grey Water Footprint
- Environmental Water Flow
- Elevation – HydroSHEDS
- GRACE

# Global Datasets

## **MODIS: LAI**

- Leaf Area Index
- Dimensionless values to characterize canopy coverage [m<sup>2</sup>/m<sup>2</sup>]
- Application -
  - assess the growth of vegetation
  - parameterization of climate models
  - photosynthesis, respiration, transpiration, and interception



## Soil Moisture

- GLDAS
- ASCAT
- SMAP

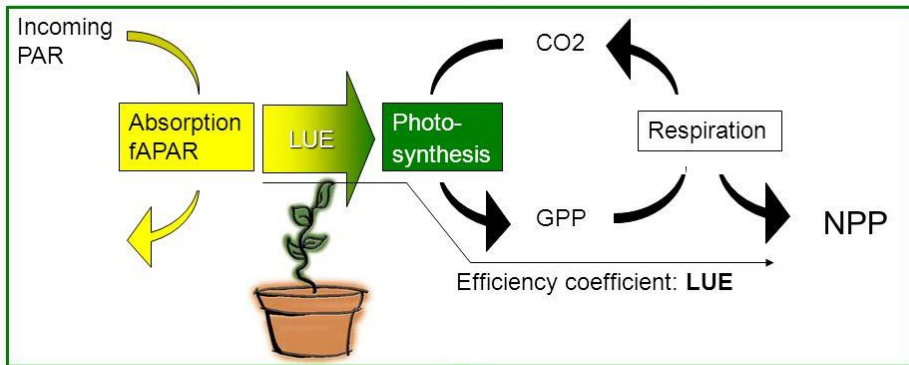
## MODIS

- LAI – MOD15
- GPP – MOD17
- NPP – MOD17



# Global Datasets

## Light Use Efficiency models



$$NPP = LUE \cdot \sum_{day=1}^{365} fAPAR \cdot PAR$$

The LUE may depend on biome, soil moisture, temperature, nutrients, age,

Measured by satellites

Modeled or measured by satellites

## Soil Moisture

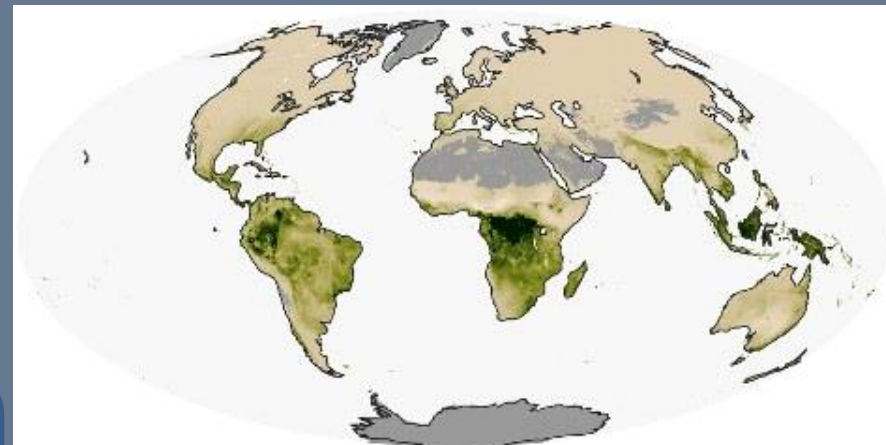
- GLDAS
- ASCAT
- SMAP

## MODIS

- LAI – MOD15
- **GPP – MOD17**
- NPP – MOD17

## MODIS: NPP/GPP

- Net Primary Production (NPP)
- Gross Primary Production (GPP)

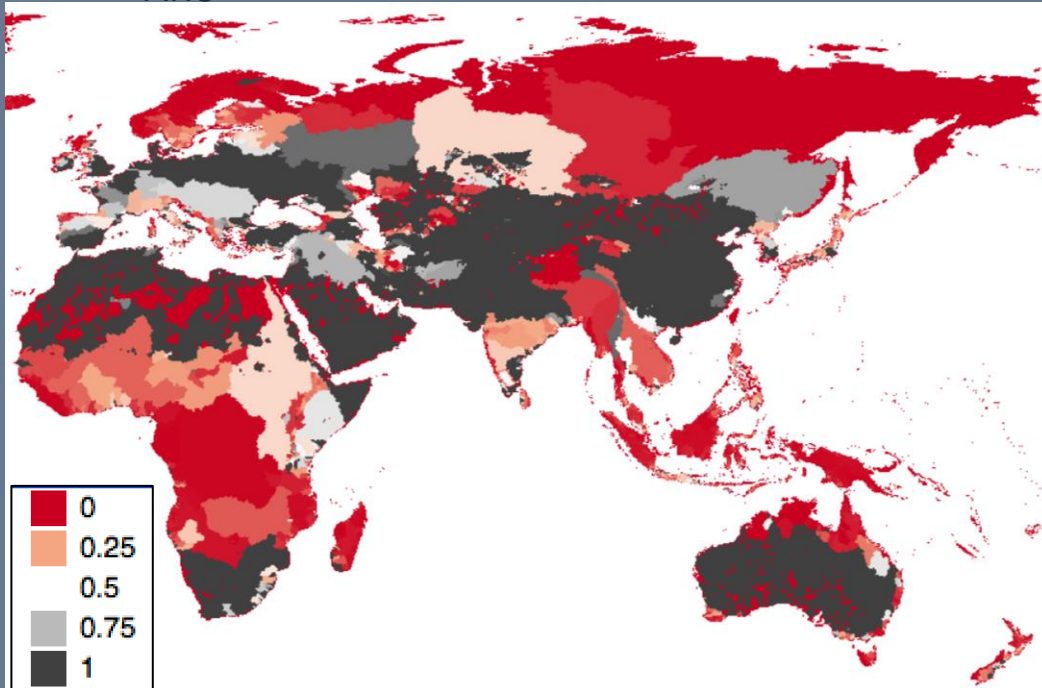


February 2000

- Elevation – HydroSHEDS
- GRACE

## ***Others: Grey Water Footprint***

- ***Global anthropogenic phosphorous loads to fresh water***
- ***5 \* 5 min***
- ***2002-2010***



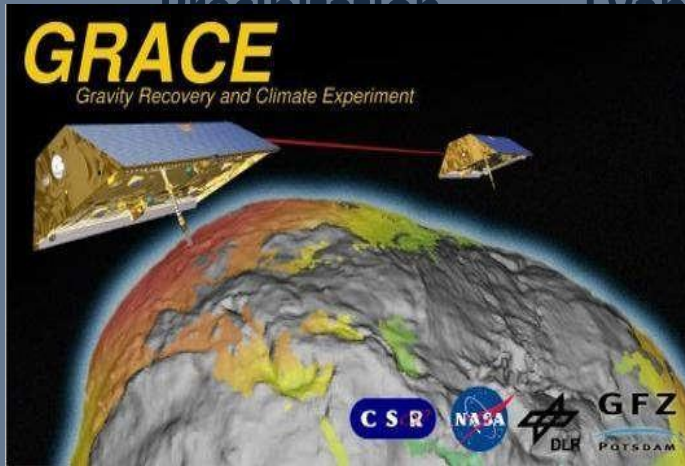
## Land Use Land Cover

- NRC-250k LULC
- GLOBCOVER
- IWMI
- GMIA
- MICRA
- WDPA
- JRC
- GRAND
- MODIS
- WORLD POP
- GLOBAL SURFACE WATER

## Others

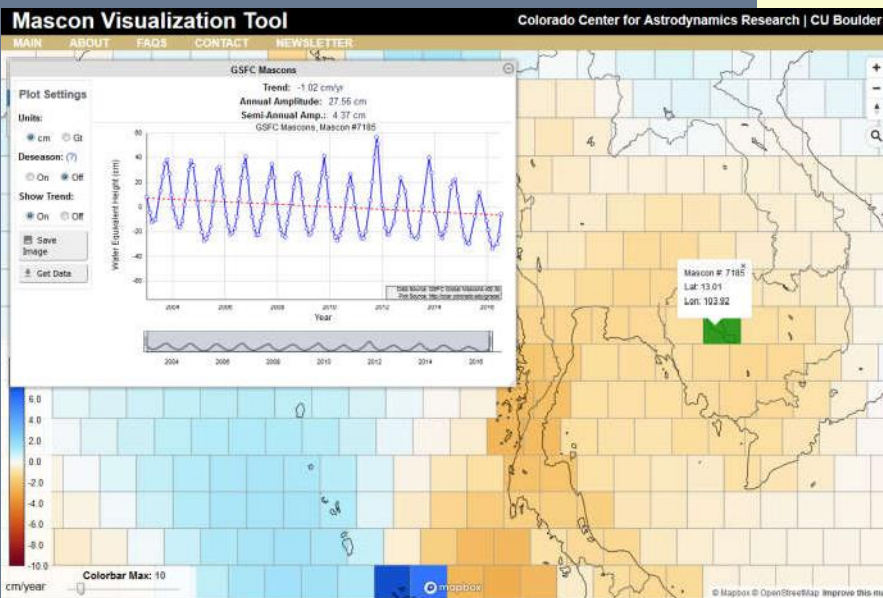
- **Grey Water Footprint**
- Environmental Water Flow
- Elevation – HydroSHEDS
- GRACE





## GRACE

- Gravity Recovery and Climate Experiment (GRACE) - NASA- JPL
- Measures changes in gravity
- Temporal resolution: ~ monthly
- Spatial resolution:  $\sim 3^\circ$  ( $\sim 300\text{km}$ )
- Initial date: April 2002
- Equivalent water depth – Groundwater, Root zone, Surface



- GLOBAL SURFACE WATER

## Others

- Grey Water Footprint
- Environmental Water Flow
- Elevation – HydroSHEDS
- GRACE

## Glacier & Snow Monitoring

- Mountain Geoportal (ICIMOD)
- Mountain Geoportal (ICIMOD)
- GLIMS Glacier Viewer (NSIDC)
- Swiss GMN
- Arctic SDI Geoportal

## Irrigation Informatics

- Water Watch
- CIMIS
- WaterNSW
- IWMI
- DEWS
- Global surface water explorer

## Others

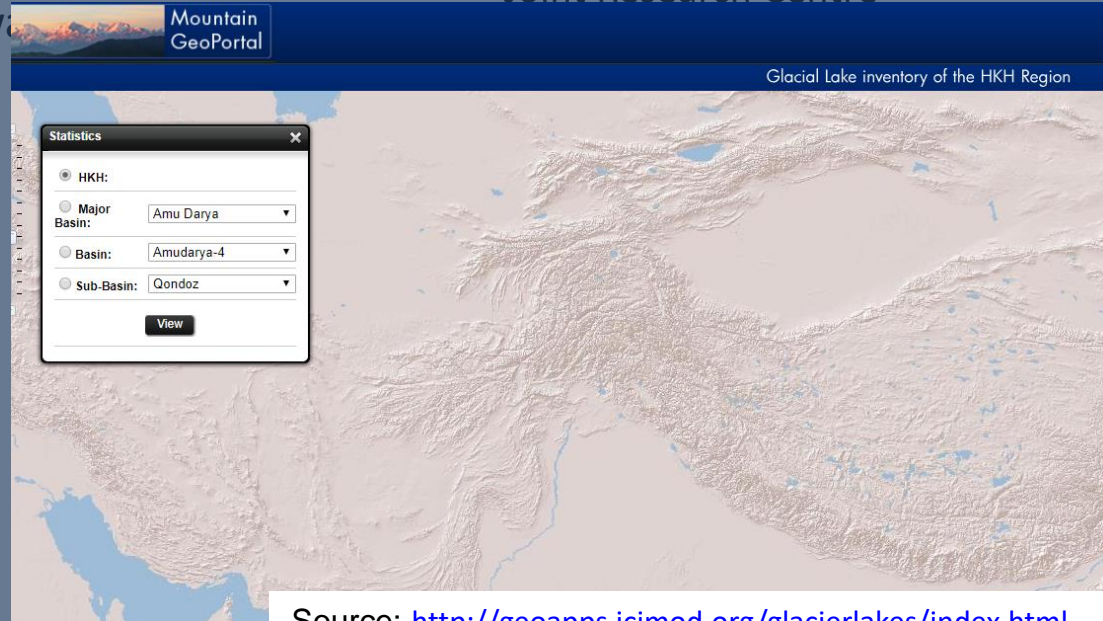
- National water information system :Web Interface
- AQUASTAT
- Giovanni
- Environmental Data Explorer
- Joint Research Centre
- Water Portal
- LAADS DAAC
- DIVA-GIS

## Glacier & Snow Monitoring

- Mountain Geoportal (ICIMOD)
- Mountain Geoportal (ICIMOD)
- GLIMS Glacier Viewer (NSIDC)
- Swiss GMN
- Arctic SDI Geoportal

## *Glacial lake*

- ICIMOD
- HKH Region
- Classification of Types of Glacial Lakes
- Contains Hydrological, Geometric, Lake, and Other Information
- Basin, Sub-basin, and Elevation wise Glacial Lake distribution, along with lake types



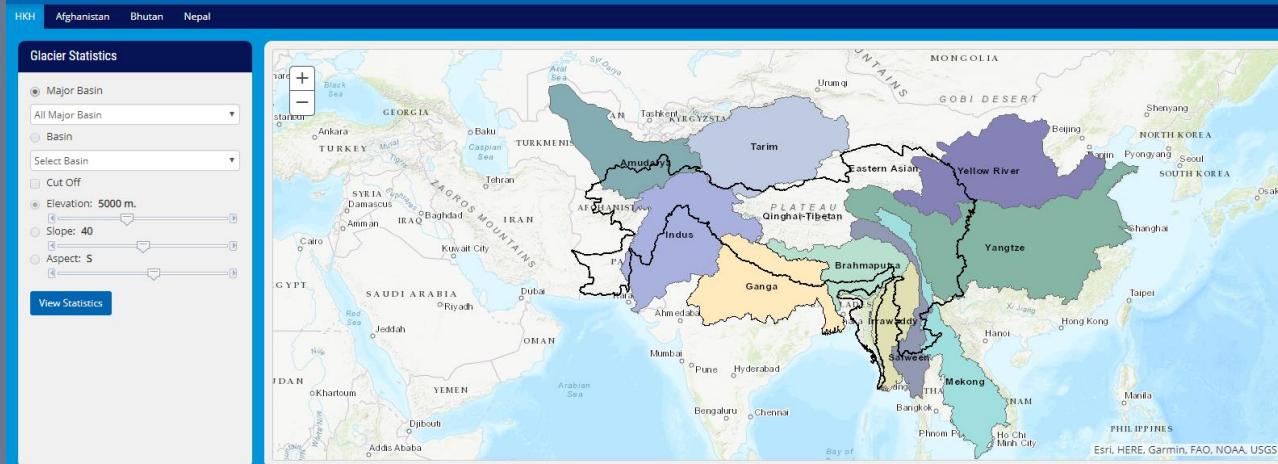
## Glacier & Snow Monitoring

- Mountain Geoportals (ICIMOD)
- Mountain Geoportals (ICIMOD)
- GLIMS Glacier Viewer (NSIDC)
- Swiss GMN
- Arctic SDI Geoportals

## Glacial

- ICIMOD
- HKH Region
- Categorized majorly based on its Primary Classification, Form, Frontal Characteristics, and Longitudinal Profile
- Areal distribution as per Basin, Sub-basin, and Elevation Range wise

### Status of Glaciers in the HKH Region

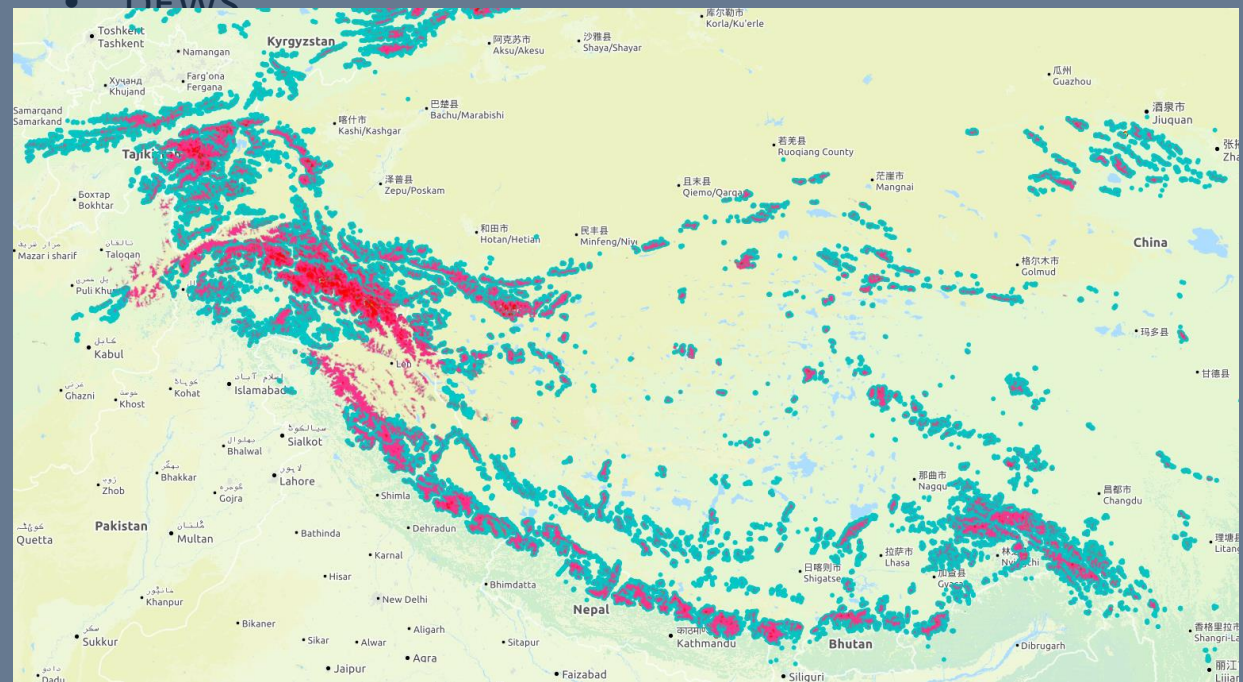


## Glacier & Snow Monitoring

- Mountain Geoportal (ICIMOD)
- Mountain Geoportal (ICIMOD)
- **GLIMS Glacier Viewer (NSIDC)**
- Swiss GMN
- Arctic SDI Geoportal

## *Glacial View*

- HKH Region
- Includes glacier outline of RGI and WGI
- Glacier class defined by RGI
- Contains area, hydrological and other information of Glacier



## Glacier & Snow Monitoring

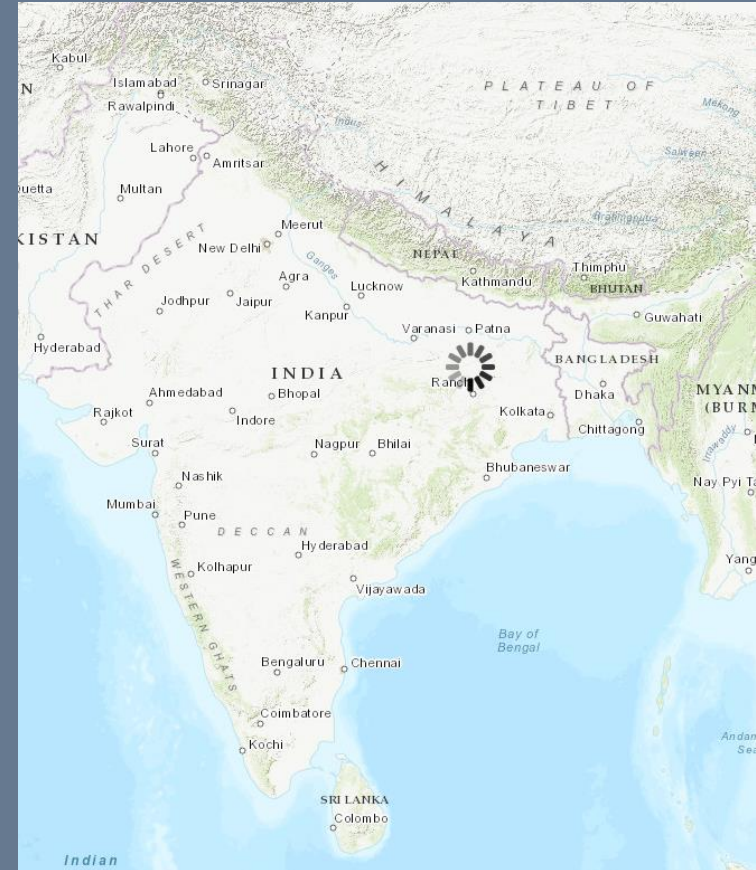
- Mountain Geoportal (ICIMOD)
- Mountain Geoportal (ICIMOD)
- GLIMS Glacier Viewer (NSIDC)
- Swiss GMN
- Arctic SDI Geoportal

## Irrigation Informatics

- **Water Watch**
- CIMIS
- WaterNSW
- IWMI
- DEWS
- Global surface water explorer

## *Water for US*

- Water Alert,
- Real-time stream flow
- Real-time flood data
- Real-time drought data
- Real-time groundwater levels



## Glacier & Snow Monitoring

- Mountain Geoportal (ICIMOD)
- Mountain Geoportal (ICIMOD)
- GLIMS Glacier Viewer (NSIDC)
- Swiss GMN
- Arctic SDI Geoportal

## Irrigation Informatics

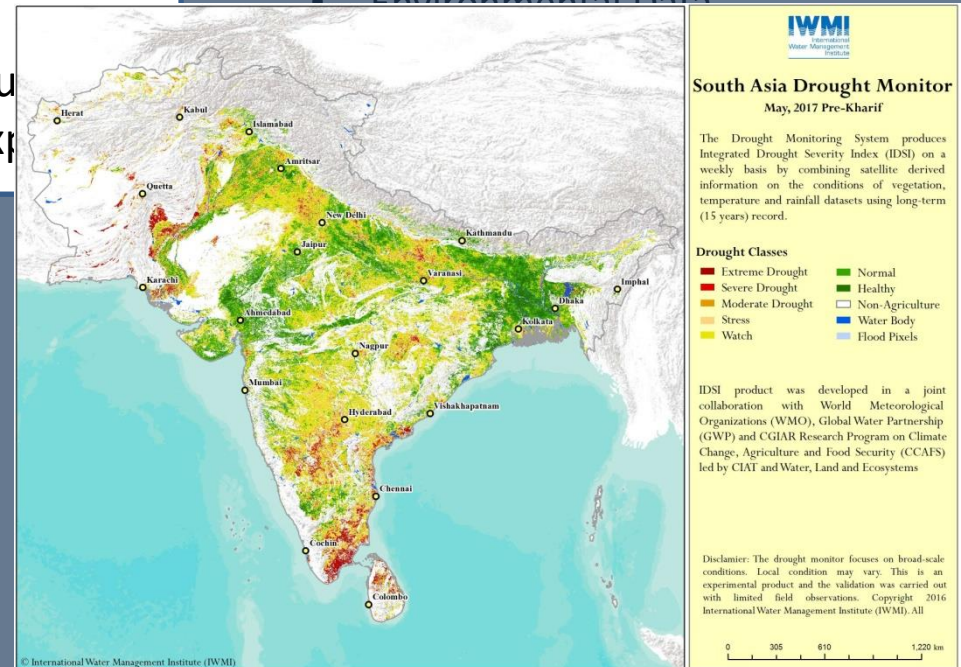
- Water Watch
- CIMIS
- WaterNSW
- **IWMI**
- DEWS
- Global su water exp

## Others

- National water information system :Web Interface
- AQUASTAT
- Giovanni
- Environmental Data

## **IWMI**

- Water accounting
- Water data portal
- Mapping drought pattern and impacts
- Irrigated area mapping
- Drought Monitor



## Glacier & Snow Monitoring

- Mountain Geoportal (ICIMOD)
- Mountain Geoportal (ICIMOD)
- GLIMS Glacier Viewer (NSIDC)
- Swiss GMN
- Arctic SDI Geoportal

## Irrigation Informatics

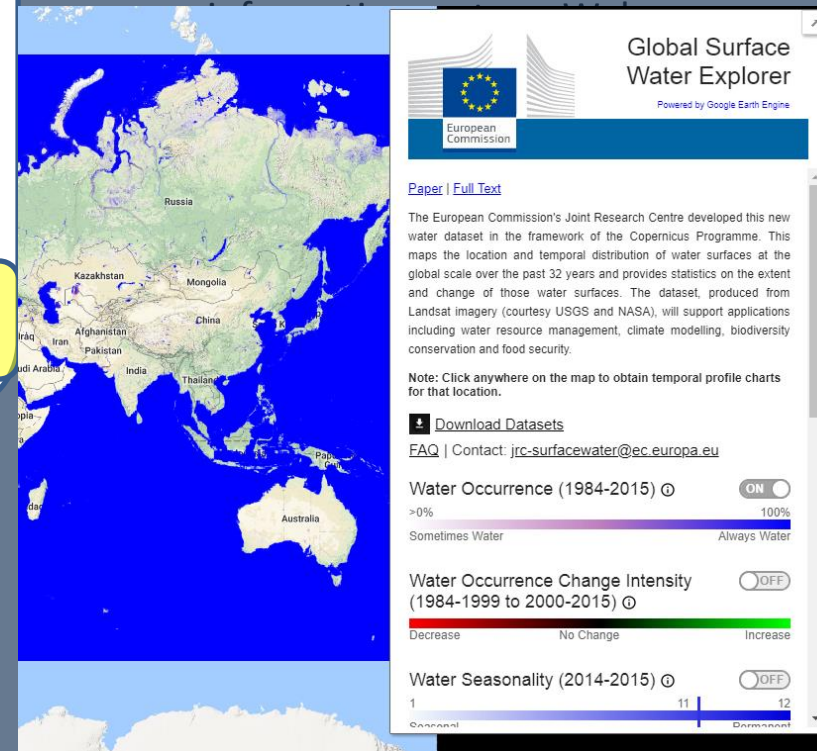
- Water Watch
- CIMIS
- WaterNSW
- IWMI
- DEWS
- **Global surface water explorer**

## Others

- National water

## ***Global Surface Water Explorer***

- Landsat Imagery
- Temporal Distribution of Water Surface over past 32 years





# Global Datasets

Food and Agriculture Organization of the United Nations

Español || Français

**AQUASTAT Home** | **About AQUASTAT** | **FAO Water** | **Statistics at FAO**

**Publications**  
AQUASTAT is FAO's global water information system, developed by the Land and Water Division. It is the most quoted source on global water statistics...

**Maps and spatial data**  
... We collect, analyze and disseminate data and information by country on water resources, water uses, agricultural water management... And much more!

**Summary tables** | **a-z** | **Glossary** | **Water resources**

**Datasets** | **Water uses** | **Wastewater**

**Visualizations and Infographics** | **"Did you know...?"** | **Irrigation and drainage**

**Key Water Indicator Portal (KWIP)** | **UN-Water Briefs (WCB)** | **Institutional framework**

**Global map of irrigation areas (GMIA)** | **SDG - Water Goal Target 6.4** | **Irrigation water use** | **Dams** | **Other themes**

**Water and gender** | **Climate information tool** | **Institutions**

**Main Database** | **Countries, regions, river basins**

## AQUASTAT

- Food and agricultural organization of the united nations
- Water resources
- Water uses
- Waste water
- Irrigation and drainage
- Global
- 1960 onwards

## Irrigation Informatics

Water Watch  
GIS  
WaterNSW  
MI  
WS  
Global surface  
Water explorer

## Others

- National water information system :Web Interface
- **AQUASTAT**
- Giovanni
- Environmental Data Explorer
- Joint Research Centre
- Water Portal
- LAADS DAAC
- DIVA-GIS

# Global Datasets

The screenshot shows the GIOVANNI web interface. At the top, it says "EARTHDATA Data Discovery - DAACs - Community - Science Disciplines -". Below that is the GIOVANNI logo and the tagline "The Bridge Between Data and Science v 4.28". A yellow banner at the top reads "IRS Project recommends not to use total column CO and CH4 ... [1 of 1 messages] Read More". The "Select Plot" section includes options for "Maps", "Time Averaged Map", "Comparisons", "Vertical", "Time Series", and "Miscellaneous". The "Select Date Range (UTC)" section has input fields for "YYYY-MM HH:mm" and "to" with a "Valid Range: 1979-01-02 to 2018-09-30" and a note "Please specify a start date." The "Select Variables" section shows "Disciplines" (Atmospheric Dynamics (1), Hydrology (43), Water and Energy Cycle (43)) and "Measurements" (Aerosol Index (6), Aerosol Optical Depth (88), Air Pressure Anomaly (1), Air Pressure (57), Air Temperature Anomaly (2), Air Temperature (102), Albedo (25), Altitude (8), Angstrom Exponent (20), Atmospheric Moisture (120), Black Carbon (5), Buoyancy (2), CH4 (8), CO (22), CO2 (2)). A search bar shows "Number of matching Variables: 44 of 1932 Total Variable(s) included in Plot: 1". A table of variables is displayed with "Direct evaporation from bare soil (NLDAS\_NOAH0125\_M\_v002)" selected.

## GIOVANNI

- Geospatial Interactive Online Visualization AND aNalysis Infrastructure
- Precipitation
- Evapotranspiration
- Soil moisture content layer
- Surface Runoff
- Global
- 1948-2018

## Others

- National water information system :Web Interface
- AQUASTAT
- Giovanni
- Environmental Data Explorer
- Joint Research Centre
- Water Portal
- LAADS DAAC
- DIVA-GIS

# Global Datasets

## Glacier & Snow Monitoring

UNEP

DEWA

GEO



United Nations Environment Programme  
environment for development

### Environmental Data Explorer

The Environmental Data Explorer is the authoritative source for **data sets** used by UNEP and its partners in the Global Environment Outlook (GEO) report and other integrated environment assessments. Its **online database** holds more than **500 different variables**, as national, subregional, regional and global statistics or as geospatial data sets (maps), covering themes like Freshwater, Population, Forests, Emissions, Climate, Disasters, Health and GDP. Display them on-the-fly as **maps, graphs, data tables** or download the data in different formats.

- Swiss GMN
- Arctic SDI Geoportal

## Irrigation Informatics

- DEWS
- Global surface water explorer

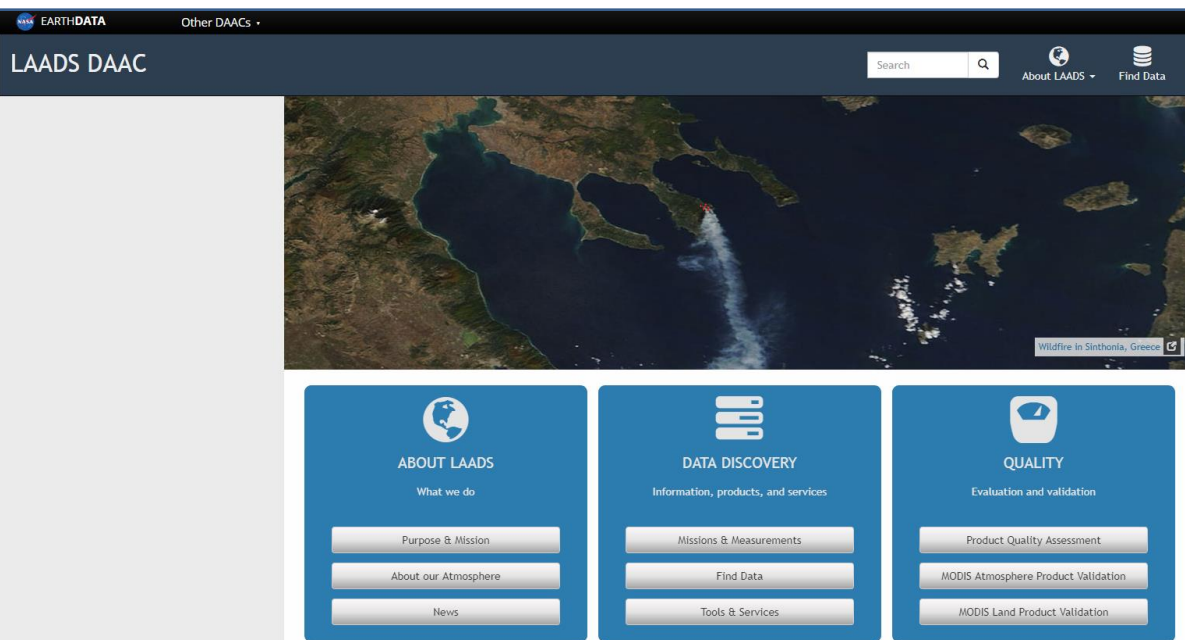
## Others

- National water information system :Web Interface
- AQUASTAT
- Giovanni
- Environmental Data Explorer
- Joint Research Centre
- Water Portal
- LAADS DAAC
- DIVA-GIS

### **Data Explorer**

- United Nation Environment programme
- **Environmental Data Explorer**
- Precipitation
- Temperature
- DEM
- River Networks
- Watershed Boundaries
- Irrigated areas
- Global
- 1970-2002

# Global Datasets



## ***Data Explorer***

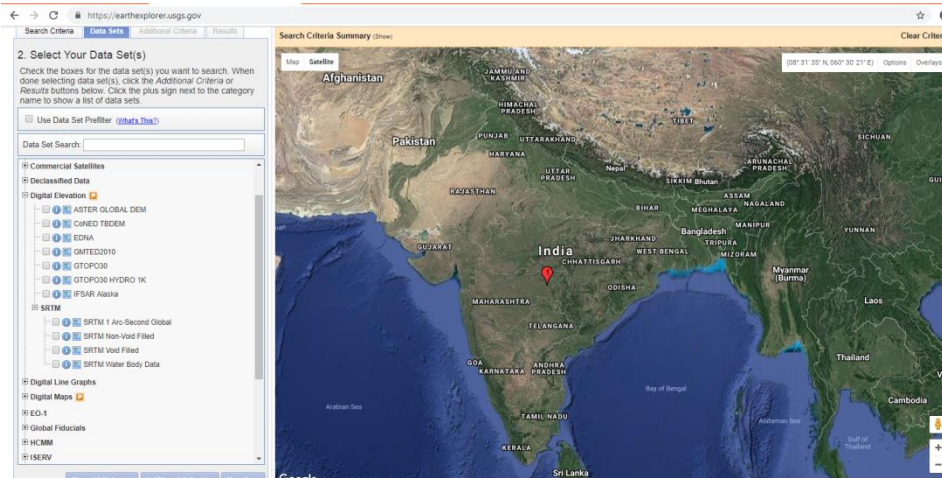
The Level-1 and Atmosphere Archive & Distribution System (LAADS) Distributed Active Archive Center (DAAC)

- Level 0, Level 1 radiance data, reflectance data, albedo
- Atmospheric products (Aerosol, Water vapour, cloud mask)
- Annual water abstraction
- Global
- Since 1999

## **Others**

- National water information system :Web Interface
- AQUASTAT
- Giovanni
- Environmental Data Explorer
- Joint Research Centre
- Water Portal
- **LAADS DAAC**
- DIVA-GIS

# Global Datasets: DEM



## ASTER GLOBAL Digital Elevation Model

Pixel Size	1 arc-second (30 m)
Geographic coordinates	Geographic latitude and longitude
DEM output format	GeoTIFF, signed 16 bits in units of vertical meters
Geoid reference	WGS84/EGM96
Special DN values	-9999 for void pixels, and 0 for sea water body
Tile volume	25 MB uncompressed, 4–5 MB compressed
Coverage	North 83 degrees to south 83 degrees, 22,702 tiles

## CARTOSAT 1 Digital Elevation Model

Projection	Geographic
Horizontal Datum	WGS84
Vertical Units	Meters
Spatial Resolution	1 arc-second for global coverage (~30 meters)
Download	Bhuvan portal

- Global 30 Arc-Second Elevation (GTOPO30)
- Global Multi-resolution Terrain Elevation Data 2010 (GMTED2010)

## Shuttle Radar Topography Mission (SRTM)

Projection	Geographic
Horizontal Datum	WGS84
Vertical Datum	EGM96 (Earth Gravitational Model 1996)
Vertical Units	Meters
Spatial Resolution	1 arc-second for global coverage (~30 meters) 3 arc-seconds for global coverage (~90 meters)
Raster Size	1 degree tiles
C-band Wavelength	5.6 cm

### **GIS Software**

1. QGIS - <https://www.qgis.org/en/site/>

### **Image Processing**

1. ORFEO Toolbox - <https://www.orfeo-toolbox.org/>
2. SNAP - <https://step.esa.int/main/toolboxes/snap/>
3. GRASS - [https://docs.qgis.org/2.8/en/docs/user\\_manual/grass\\_integration/grass\\_integration.html](https://docs.qgis.org/2.8/en/docs/user_manual/grass_integration/grass_integration.html)

### **Data Visualization**

1. Panoply - <https://www.giss.nasa.gov/tools/panoply/>
2. HDFview - <https://www.hdfgroup.org/downloads/hdfview/>

### **Hydrological Models**

1. HEC-HMS - <https://www.hec.usace.army.mil/software/hec-hms/>
2. SWAT - <https://swat.tamu.edu/>
3. VIC - <https://vic.readthedocs.io/en/vic.4.2.c/Documentation/TechnicalNotes/Modes/>
4. sphy - <https://www.sphy.nl/>
5. CROPWAT - <http://www.fao.org/land-water/databases-and-software/cropwat/en/>
6. MODFLOW - [https://www.usgs.gov/mission-areas/water-resources/science/modflow-and-related-programs?qt-science\\_center\\_objects=0#qt-science\\_center\\_objects](https://www.usgs.gov/mission-areas/water-resources/science/modflow-and-related-programs?qt-science_center_objects=0#qt-science_center_objects)

Thank you